



# Gable Ends for Slide Out Cover With Fixed Mounting Rail

## Assembly and Installation Instructions



Before Gable End



After Gable End

Read the instructions before starting the job. They explain the steps required to produce a finished product that will meet factory specifications.

All references to “Left” and “Right” are while facing the home.

Check the material received.

Match your shipment with the Bill of Materials.

If there is a shortage or wrong material,  
call Dealer Service immediately.

Safety is important!

Wear Safety Glasses and Work Gloves.

Follow all safety practices while assembling  
and installing this product.

---

Dura-Bilt Products, Inc. P.O. Box 188 Wellsburg, N.Y. 14894

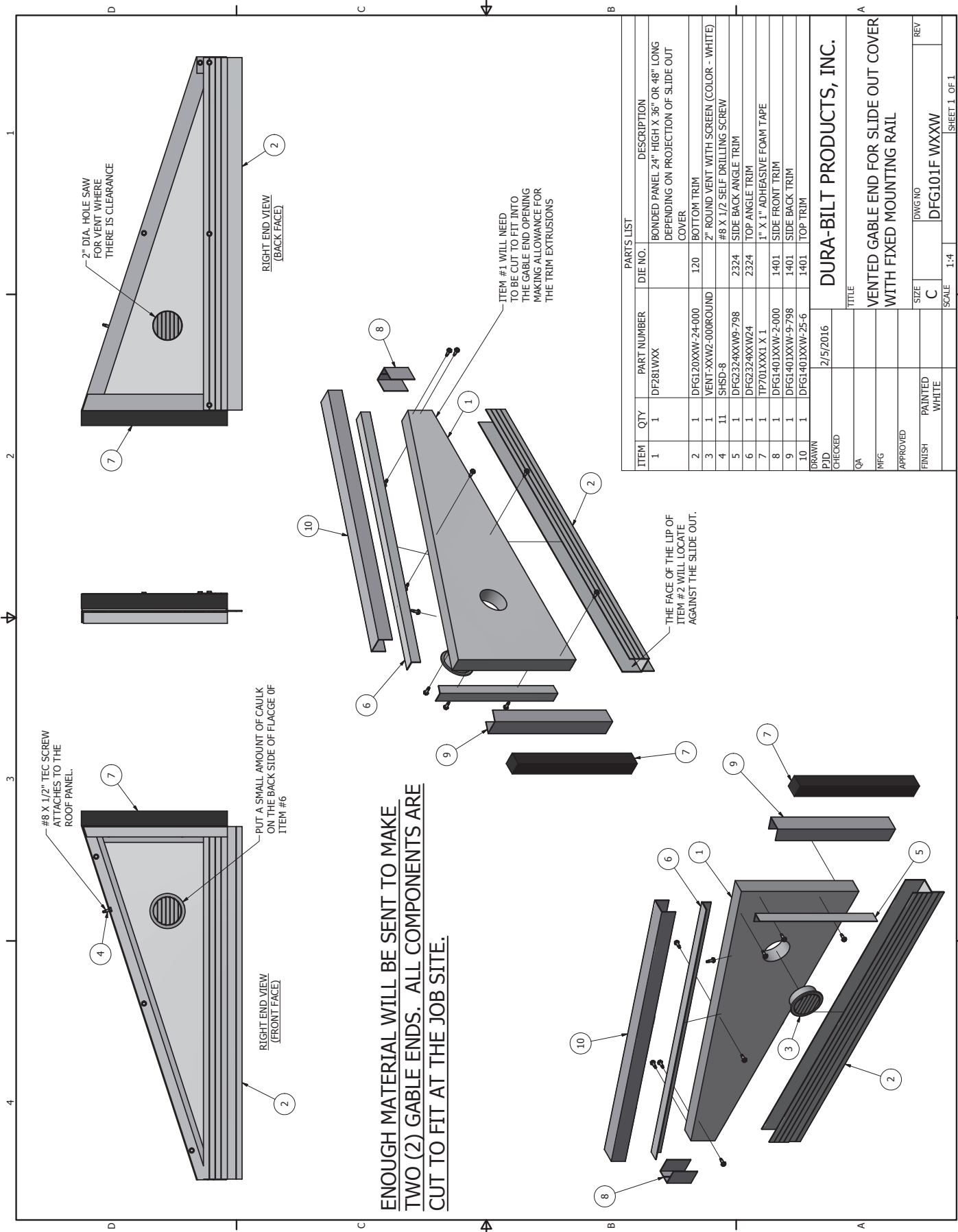
*Dealer Service 570-596-2000 E-Mail [info@durabilt.com](mailto:info@durabilt.com)*

DURA-BILT RESERVES THE RIGHT TO CHANGE DESIGN AND/OR SPECIFICATIONS WITHOUT NOTICE.

# **Instructions**

**(Refer to illustrations on previous pages)**

1. After the Dura-Fold Slide Out Cover is installed, measure the opening for the Right Gable End.
2. Take into account the thickness of the Trim Extrusions and cut the Bonded Panel to fit the opening. (Suggestion - Make a cardboard template for the opening to help with cutting the Bonded Panel)
3. Cut trim pieces, Item #3 (Top Trim), #4 (Side Back Trim) & #5 (Side Front Trim) to fit the top, back and front and then trim the excess from all corners for a good fit in the opening. Cut trim piece Item #2 (Bottom Trim) to fit bottom edge of Gable End.
4. Cut angle trim pieces, Item #9 (Side Back Angle Trim) & #10 (Top Angle Trim) to fit to Items #3 (Top Trim) & #4 (Side Back Trim).
5. Secure the trim pieces, Item #4 (Side Back Trim) & #5 (Side Front Trim) place item #3 (Top Trim) with securing to back face of gable end with #8 x 1/2" self drilling screws as shown.
6. Secure the angle trim pieces Item #9 (Side Back Angle Trim) to item #4 (Side Back Trim) trim piece with #8 x 1/2" self drilling screws as shown.
7. Using a 2" Hole Saw and cut the hole for the 2" Round Vent in the Gable End in a place that will not cut into the RV.
8. Place a small amount of caulk on the back of the flange of the 2" Vent to seal and hold it in place.
9. Attach the 1" x 1" adhesive foam tape to item #4 (Side Back Trim) to get a good seal against the side of the RV.
10. Slide the Gable End into the RV opening. Slide item #3 (Top Trim) up against the bottom of the slide out cover panel and secure item #10 (Top Angle Trim) to item #3 (Top Trim) with the #8 x 1/2" self drilling screws. Use one (1) screw thru Item #3 (Top Trim) and into the under side of the Slide Out Cover Panel. Depending on how tight of a fit your new Gable End has in the opening, more screws may be required.
11. Repeat steps 1 thru 9 for the left Gable End.



**ENOUGH MATERIAL WILL BE SENT TO MAKE TWO (2) GABLE ENDS. ALL COMPONENTS ARE CUT TO FIT AT THE JOB SITE.**

PARTS LIST			
ITEM	QTY	PART NUMBER	DESCRIPTION
1	1	DF281WXX	BONDED PANEL 24" HIGH X 36" OR 48" LONG DEPENDING ON PROJECTION OF SLIDE OUT COVER
2	1	DFG120XXW-24-000	BOTTOM TRIM
3	1	VENT-XXW2-000ROUND	2" ROUND VENT WITH SCREEN (COLOR - WHITE)
4	11	SHSD-8	#8 X 1/2 SELF DRILLING SCREW
5	1	DFG2324XXW9-798	SIDE BACK ANGLE TRIM
6	1	DFG324XXW24	TOP ANGLE TRIM
7	1	TP701XXX1 X 1	1" X 1" ADHESIVE FOAM TAPE
8	1	DFG1401XXXW-2-000	SIDE FRONT TRIM
9	1	DFG1401XXXW-9-798	SIDE BACK TRIM
10	1	DFG1401XXXW-25-6	TOP TRIM
DRAWN 2/5/2016			
P/J CHECKED			
TITLE			
VENTED GABLE END FOR SLIDE OUT COVER WITH FIXED MOUNTING RAIL			
MFG			
APPROVED			
FINISH PAINTED WHITE			
SIZE C			
DWG NO DFG101F WXXW			
SCALE 1:4			
REV			

**DURA-BILT PRODUCTS, INC.**