



Roof Support System for Dura-Therm Assembly and Installation Instructions

Read the instructions before starting the job. They explain the steps required to produce a finished product that will meet factory specifications.

All references to "Left" and "Right" are while facing the home.



Check the material received.
Match your shipment with the Bill of Materials.
If there is a shortage or wrong material,
call Dealer Service immediately.

Safety is important!
Wear Safety Glasses and Work Gloves.
Follow all safety practices while assembling
and installing this product.

Dura-Bilt Products, Inc. P.O. Box 188 Wellsburg, N.Y. 14894

Dealer Service 570-596-2000 E-Mail info@durabilt.com

DURA-BILT RESERVES THE RIGHT TO CHANGE DESIGN AND/OR SPECIFICATIONS WITHOUT NOTICE.

Installation Instructions

Note: After you have assembled the Deluxe Front Header, you will have to line it up with the Mounting Rail and mark and cut clearance holes (1/2" Dia. Hole Minimum) for the 1/4"-20 x 1/2" Bolt and Nut that fastens the Girder to the Mounting Rail.

Note: For 3" Dura-Therm you must cut the Deluxe Front Header to the Mounting Rail Length.

1. The Roof Support System will be installed after the Dura-Therm Roof is completed.
2. The Deluxe Front Header for the Roof Support System will be laid out and assembled on the ground. If the Roof is longer than 16'; Deluxe Front Header Joiner will be used to fasten the sections of Deluxe Front Header together for proper length.

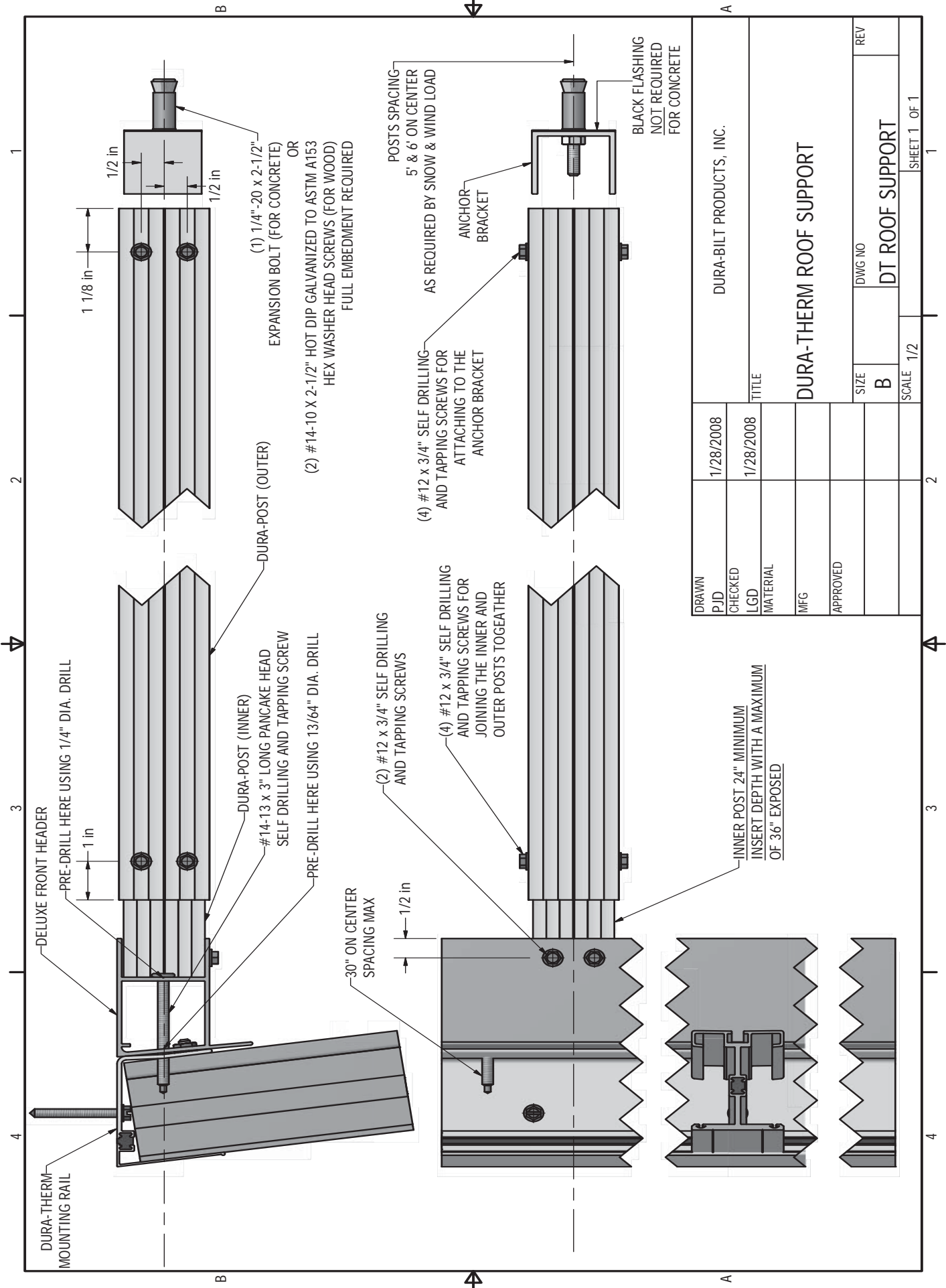
Note: You should pay close attention to the location of Doors and Windows and where you will be fastening the Posts.

3. Attach the Deluxe Front Header to the Mounting Rail using one (1) #14-13 x 3" Long Pancake Head Screw with 30" On Center Spacing as shown in the drawing. **Do Not attach at the Girder.**
4. Locate and mark the location of the posts and attach the Inner Post to the Deluxe Front Header using two (2) #12 x 3/4" Self Drilling and Tapping Screws.
5. Plumb the Outer Post and mark the location for installing the Anchor Bracket.

Note: If you are installing Columns on a Pressure Treated Lumber Deck. With your order you will receive a 4" x 4-1/2" piece of Black Flashing with paper coated adhesive on one side for each Dura-Post. Peel the paper off from the Flashing and stick the flashing to the bottom of the Anchor Bracket. Then trim the excess Flashing from around the Anchor Bracket.

6. Move post and install Bracket using wood or concrete fasteners.
7. Install post over the Anchor Bracket and attach with four (4) #12 x 3/4" Self Drilling and Tapping Screws. As shown in the drawing.
8. Repeat steps 4 thru 7 for remaining posts.

Note: The wood fasteners are specially treated to ASTM A153 to resist the corrosiveness of treated lumber.



DRAWN	1/28/2008	DURA-BILT PRODUCTS, INC.	
CHECKED	1/28/2008	TITLE	
LGD		DURA-THERM ROOF SUPPORT	
MATERIAL		SIZE	DWG NO
MFG		B	DT ROOF SUPPORT
APPROVED		SCALE	1/2
		REV	SHEET 1 OF 1