



Roof Support System for Dura-Lock Assembly and Installation Instructions

Read the instructions before starting the job. They explain the steps required to produce a finished product that will meet factory specifications.

All references to "Left" and "Right" are while facing the home.



Check the material received.
Match your shipment with the Bill of Materials.
If there is a shortage or wrong material,
call Dealer Service immediately.

Safety is important!
Wear Safety Glasses and Work Gloves.
Follow all safety practices while assembling
and installing this product.

Dura-Bilt Products, Inc. P.O. Box 188 Wellsburg, N.Y. 14894

Dealer Service 570-596-2000 E-Mail info@durabilt.com

DURA-BILT RESERVES THE RIGHT TO CHANGE DESIGN AND/OR SPECIFICATIONS WITHOUT NOTICE.

Installation Instructions

Note: Remove the #12 x 3/4" Self Drilling and Tapping Screws that go thru the under side of the Mounting Rail and into the Roof Panel. You will reinstall them thru the lip of the Deluxe Front Header and into the Roof Panel after the Roof Support System is Installed.

1. The Roof Support System will be installed after the Dura-Lock Roof is completed.
2. The Deluxe Front Header for the Roof Support System will be laid out and assembled on the ground. If the Roof is longer than 16'; Deluxe Front Header Joiner will be used to fasten the sections of Deluxe Front Header together for proper length.

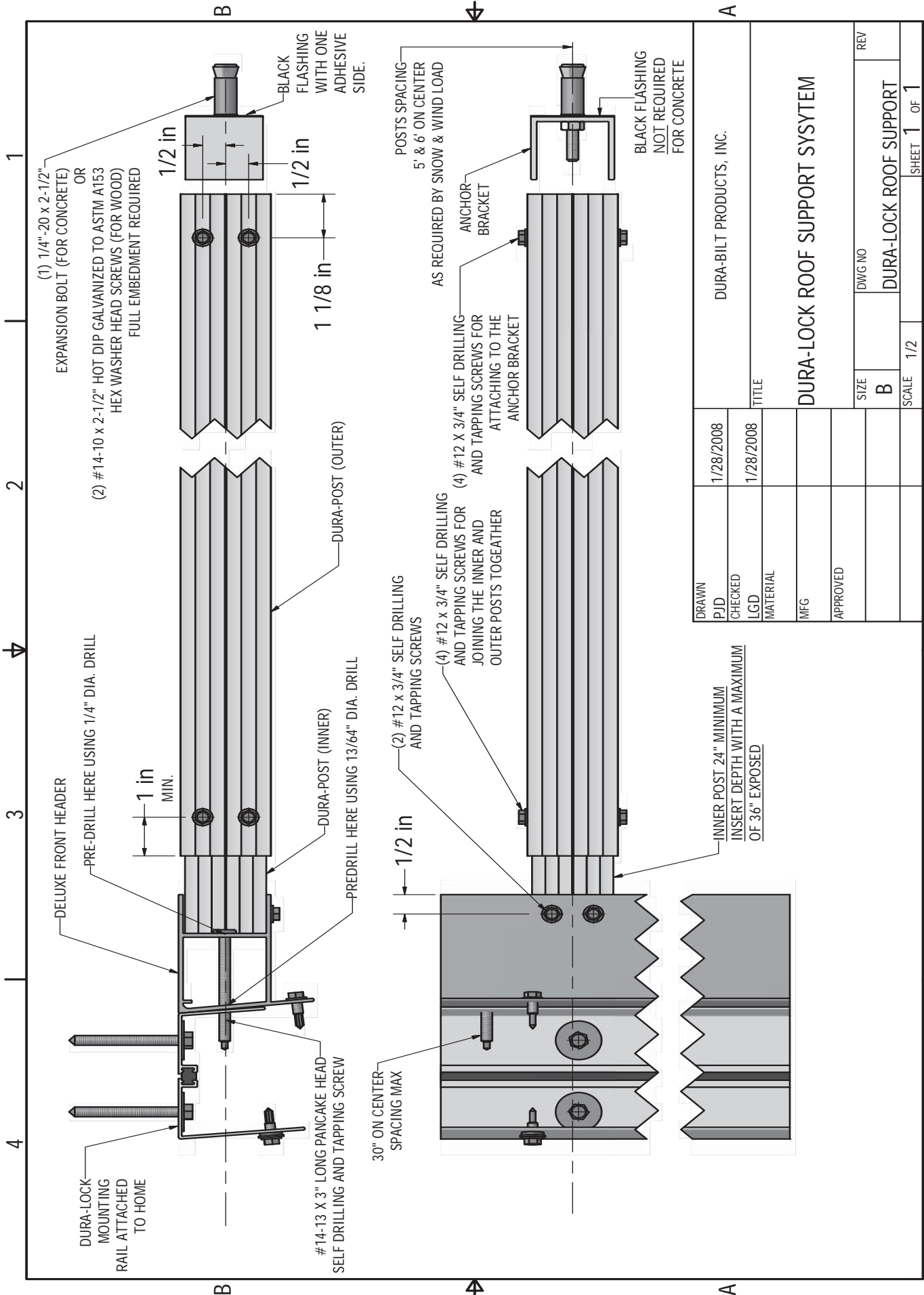
Note: You should pay close attention to the location of Doors and Windows and where you will be fastening the Posts.

3. Attach the Deluxe Front Header to the Mounting Rail using one (1) #14-13 x 3" Long Pancake Head Screw with 30" On Center Spacing as shown in the drawing.
4. Locate and mark the location of the posts and attach the Inner Post to the Deluxe Front Header using two (2) #12 x 3/4" Self Drilling and Tapping Screws.
5. Plumb the Outer Post and mark the location for installing the Anchor Bracket.

Note: If you are installing Columns on a Pressure Treated Lumber Deck. With your order you will receive a 4" x 4-1/2" piece of Black Flashing with paper coated adhesive on one side for each Dura-Post. Peel the paper off from the Flashing and stick the flashing to the bottom of the Anchor Bracket. Then trim the excess Flashing from around the Anchor Bracket.

6. Move post and install Bracket using wood or concrete fasteners.
7. Install post over the Anchor Bracket and attach with four (4) #12 x 3/4" Self Drilling and Tapping Screws. As shown in the drawing.
8. Repeat steps 4 thru 7 for remaining posts.

Note: The wood fasteners are specially treated to ASTM A153 to resist the corrosiveness of treated lumber.



DRAWN		1/28/2008		DURA-BILT PRODUCTS, INC.	
CHECKED		1/28/2008		TITLE	
LGD				DURA-LOCK ROOF SUPPORT SYSTEM	
MATERIAL				SIZE	
MFG				B	
APPROVED				DWG NO	
				DURA-LOCK ROOF SUPPORT	
				SCALE	
				1/2	
				SHEET	
				1 OF 1	

1 2 3 4

4 3 2 1